

GBINS

Weekly Newsletter



Attendance Matters

Please make sure:

1. Children attend school every day.
2. You notify school of an absence at the earliest opportunity.
3. You book medical appointments outside of the school day where possible.
4. Children get to school on time and ready to begin early morning work.



UPCOMING EVENTS

Library Open for Business!

Don't forget, our school library is open every Monday after school for children in Reception, Year 1 and Year 2 to come and choose up to 3 books to enjoy at home. We welcome library visitors in through the Eagle Classroom door, once all of the children in Eagle Class have been dismissed at the end of the school day. All children must be accompanied by an adult.

See you Monday!

Mr Kimber



SCHOOL VALUES KINDNESS

We have been thinking about kindness this week in assemblies.

Children in Year 1 and Year 2 have been sharing all of the different ways they can show kindness to others. We had examples such as:

Giving a hug

Showing someone where to find things

Tidying up for other people

Saying kind things to friends

Be
Kind.

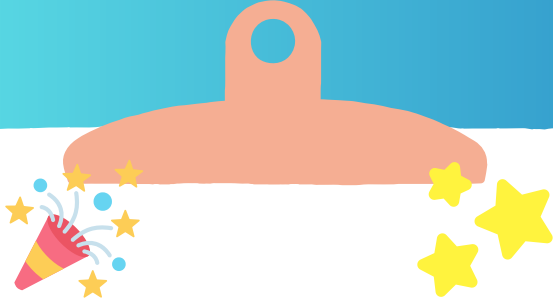
Start Well Roadshows!

Parents and carers of under 5s – come along to the Start Well Roadshows this October across Mid Essex! These free, drop-in events offer expert advice, peer support, and fun activities for little ones. Whether you're preparing for preschool or just need a bit of support, there's something for everyone.

📍 Locations include Chelmsford, Braintree, Maldon, Dengie and Witham.

👉 [Click here for dates and details](#)

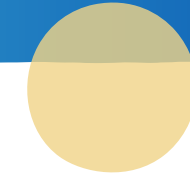
GBINS ^{Weekly} Newsletter



CELEBRATE!

Well done to this week's Stars of the Week...

Hawk Class - Mia and Max
Eagle Class - Seth and Leo
Kestrel Class - Mason and Ivy
Swift Class - Eleanor and Maciej
Owl Class - Owen and Iris
Wagtail Class - Evelyn and Ellie
Woodpecker Class - Isla and Mia
Robin Class - Jude and Isaac
Kingfisher Class - Isaac and Storm
Puffin Class - Lily and Aiden



CELEBRATE!

This week's tidiest classroom
Owl

Highest Attendance Award
Kestrel with 98.52%

Most Punctual Class
Eagle



Don't forget!

Name all items coming into school.

Reception classes would like spare socks and wallpaper.

Food bank items can be brought into school from 2nd October.

If your child needs treating for head lice, they can come into school following treatment.

BRAINTREE FOODBANK AND THE LITTLE EDI FOUNDATION

This year, we are collecting for both charities. The Braintree Foodbank are leading an assembly for the children next week, on Thursday 2nd Oct.

From this date, we would love you to contribute to the collection with whatever you can.

Please deliver any items to the school entrance where there will be a table for items to be sent to the charities.

