

GBINS



Weekly Newsletter



NURSERY STAY AND PLAY

Miss Banes and the team are inviting families with children in our nursery to 'stay and play' sessions on the following dates:

Monday 1st December

Thursday 4th December

At either 8.40-10.30am or
12.20-2.00pm

If you want to come to a session, you can just turn up and sign in on the day.

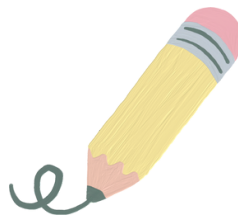
However, please note it is one adult per child per session (this can be a grandparent). You are welcome to attend more than one session.

SCHOOL ADMISSIONS - OPEN NOW!

If you need to apply for a school place for **Reception or Year 3** - you need to apply via Essex County Council between 10th Nov 2025 - 15th Jan 2026.

See the website via the link below:

<https://www.essex.gov.uk/schools-and-learning/schools/admissions/admissions-september-2026>



Children In Need

Thank you for your donations we raised a brilliant £244.88.



Considerate Parking Please

Please can we request that you are considerate of other road users at drop off and pick up time.

Please also be aware that at these times, there are many children trying to walk on pavements that should not be obstructed by cars. Nor should cars be driven on the edge of pavements!

Thank you for your support to keep our children safe.



PINS Parent Workshop on Understanding Neurodiversity

On Friday 12th December, we are holding a free workshop for parents, led by a member of the PINS team, starting at 9.15am.

The workshop will explore nurturing the unique strengths of neurodiverse children and provide advice and guidance on how to support them with the challenges they face. It will also look at helping neurodiverse children be ready to learn and engage in the classroom.

The workshop is open to all parents, whether your child is neurodivergent or not.

To book, please do so via the link below:

<https://forms.office.com/e/Bb5WwimBnc>

GBINS



Weekly Newsletter



CELEBRATE!

Well done to this week's Stars of the Week...

Hawk Class - Maleah and Roman

Eagle Class - Francesca-Rose and JJ

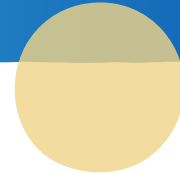
Kestrel Class - Sophia and Harlie

Swift Class - Rylee and Kylo

Owl Class - Lucas and Sa'ad

Wagtail Class - Noah and Tommy

Awarded for all of our school values!



CELEBRATE!

Well done to this week's Stars of the Week...

Woodpecker Class - Mabel and Taji

Robin Class - Oliver and Florence

Kingfisher Class - Poppy and Elsie-Mae

Puffin Class - Emilia and Theo

Awarded for kindness, perseverance, fairness and respect!



CELEBRATE!

This week's tidiest classroom
Puffin Class

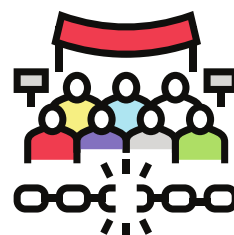
Highest Attendance Award
Eagle Class with 99%

Most Punctual Classes
Eagle Class and Robin Class

CLASS ASSEMBLY - DATE CHANGE

Please note that we have had to change the date for the Eagle Class assembly.

It will now be on Friday 20th March 2026.



| Diary Dates | | |
|-----------------------|---|--------------------|
| 26.11.25 | PINS Parent Forum | 9.15am |
| 2.12.25 | Flu vaccinations – Rec to Yr 2 | Day |
| | Governors Meeting | |
| 3.12.25 | Year 1 Travelling Zoo Visit | Day |
| 5.12.25 | Swift class assembly | 9.05am 3.30-6pm |
| | School Christmas Discos | |
| 9.12.25 | Reindeer Run for Farleigh Hospice | Day |
| 10.12.25 | Christmas Dinner and Christmas Jumper Day | Day |
| 12.12.25 | Parent Workshop on Neurodiversity | 9.15am |
| 17.12.25 | Carols by Candlelight – St. Peter's Church | AM |
| 19.12.25 | Last day of term | 3.20pm |
| 22.12.25 to 2.1.25 | Christmas Holidays | |
| 5.1.26 | Back to school for Reception, Year 1 and Year 2 | 8.40am |
| 6.1.26 | Back to school Nursery | 8.40 am |